

# Newsletter

*promoting, supporting and encouraging  
classical music locally!*

## **MUSINGS ON OUR FEBRUARY CONCERT & AGM...**

### **NORTH SHORE FLUTE ENSEMBLE**

On Saturday 8th February, prior to the AGM, we were entertained by the North Shore Flute Ensemble, a subgroup of the North Shore Concert Band. Before the concert, Richard Wiseman from Arts National spoke to us about the art exhibition by Janet Brown, that will be shown at our next piano and cello concert on 16th March.

The flute concert was led by Jenny Ridgeway, Marcus Foxtan, Louise Wilson and Georgie Calleia. They were joined by Adrienne Henslow, a student in year 12 from Brigidine College, who filled in for an indisposed member. The performance, on 5 flutes, a bass flute and a piccolo, included pieces by Saint-Saëns, Schubert and Mendelssohn. The concert finished with a Greek folk song by Misirlou, which has featured in a few pop songs and in the movie Pop Fiction.

After the concert, several people commented on how interested they were to see and hear the very large bass flute played by Louise – a first experience for many of us.

It was disheartening that more people did not come to our FREE concert and experience this wonderful ensemble in action, or to support Music Shoalhaven at our AGM!

by Susan Ballinger and Sarah Turvey



# 2025 CONCERT SERIES

**Nowra School of Arts | 2pm**

**Sunday 16 March**

Daniel Herscovitch (Piano) and Minah Choe (Cello)  
With an ART EXHIBITION by JANET BROWN

**Sunday 4 May**

The Highlands Music Collective - Myee Clohessy Quartet  
(Myee Clohessy, Annabel Wouters, Catherine Barnett & Luke Bowen)

**Sunday 3 August**

"A Noel Coward Cabaret" - John Martin

**Sunday 5 October**

Australian Haydn Ensemble Alchemy

**Sunday 16 November**

Katrina Choi (Piano)

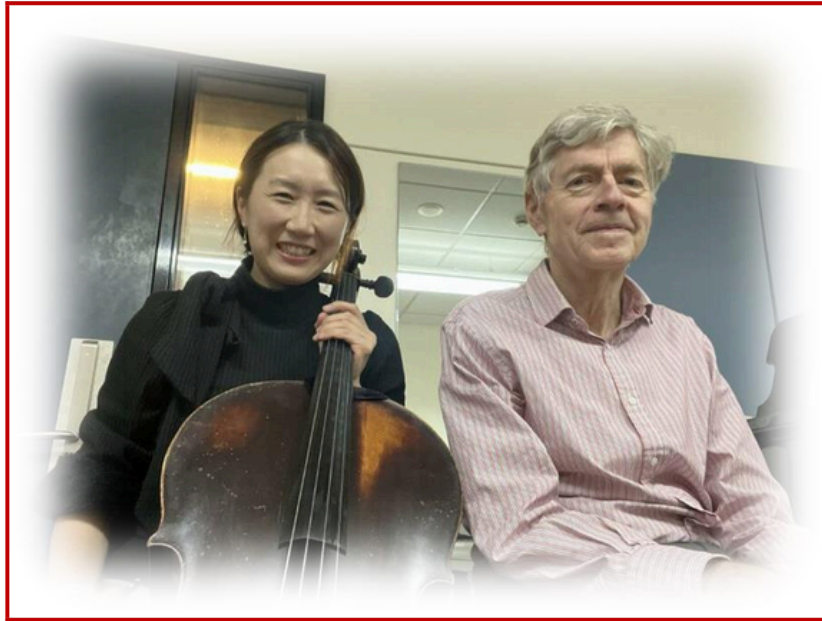
**Tickets available at the door with cash or card.**

**Adults/Concessions: \$40**

**Children/Students: free**

[www.musicshoalhaven.org.au](http://www.musicshoalhaven.org.au)

***Music Shoalhaven Presents:***



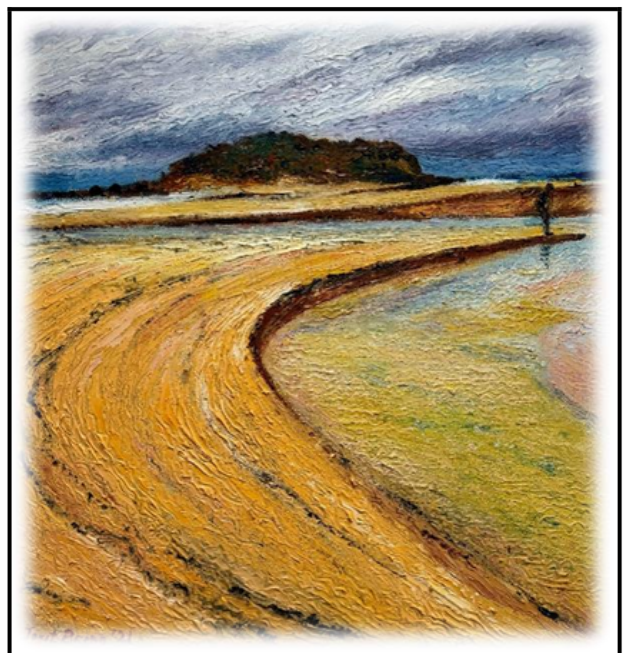
*The amazing playing of*  
***MINAH CHOE (Cello) and DANIEL HERSCOVITCH (Piano)***

*2:00pm, Sunday, 16th March*

*Nowra School of Arts*

*Tickets: \$40*

***And a display of the Artwork of JANET BROWN (Local Artist)***



*Doors will be open from 1:15pm*

*Paintings will be for sale.*

## WHAT ELSE IS ON LOCALLY?

### THE SONG COMPANY

**Sat 8 March | 3pm | St Francis Xavier Cathedral, Wollongong**

***Journeying to Finisterre*** is an evocative exploration of pilgrimage, not just across landscapes but deep within the self. Curated by Co-Artistic Director and Soprano Amy Moore, this program delves into the 12th Century Codex Calixtinus and 14th Century Libre Vermell de Montserrat—devotional manuscripts that guided pilgrims both physically and spiritually.

<https://the.song.company/2025-season/journeying-to-finisterre/>

### AUSTRALIAN BRANDENBURG ORCHESTRA

**Thurs 13 March | 7.30pm | Shoalhaven Entertainment Centre**

An intimate evening with a small ensemble of the Brandenburg's finest musicians performing a selection of enchanting works from the Baroque era on Period instruments.

<https://www.shoalhavenentertainment.com.au/Whats-On/Event-Details/Australian-Brandenburg-Orchestra>

### AUSTRALIAN HAYDN ENSEMBLE

**Fri 14 March | 7pm | Berry Uniting Church Hall**

**Haydn's Sunrise** – string quartets by Haydn, Beethoven and Fanny Mendelssohn played on Period instruments.

<https://www.australianhaydn.com.au/haydns-sunrise>

### MILTON/ULLADULLA MUSIC

**Sat 15 March | 2pm | ST MARTINS ANGLICAN CHURCH (Cnr Princes Highway and Green Street, Ulladulla)**

**SONIDO (Sounds) of Latin America!**

Influenced by the music of their Australian home, as well as the poetry, sounds and rhythms of their Latin American heritage, the musicians of SONIDO present a unique form of Latin American-infused music forged in the crucible of their families' immigrant experience in 1970's and 80's Australia.

<https://miltonulladullamusic.org/>

## **GERRINGONG MUSIC CLUB**

**Sun 16 March | 2pm | Gerringong Town Hall**

### **Estampa**

Back by popular demand, Estampa brings a unique musical experience deeply rooted in the rich traditions of French jazz and Brazilian bossa nova. Their performance will leave you wanting more.

<https://www.gerringongmusicclub.com.au/event-details/estampa-4>

## **STEEL CITY STRINGS**

**Sun 16 March | 2pm | Berry School of Arts**

**Common Ground** considers that music starts with vibrant cultures and their musical self-expression. The enduring legacy of folk music with its ancient rhythms and evocative melodies finds common ground in the present-day works by Sandor Veress, Peter Sculthorpe and Gerard Brophy. A particular treat will be the haunting strains of a Balinese gamelan orchestra.

<https://steelcitystrings.com.au/>

## **MUSIC IN THE VALLEY**

### ***Piers Lane - Piano***

*Schubert & Chopin* - Hausmusik Concert in Kangaroo Valley

**Sat 5 April | 3pm SOLD OUT**

**Sun 6 April | 3pm** Tickets to be released soon

<https://events.humanitix.com/piers-lane-concert-ii-2025>

## **SHOALHAVEN LYDIAN SINGERS**

**SAT 12 April | 2pm | Berry School of Arts**

**SUN 13 April | 2pm | Nowra School of Arts**

**Songs and Sonnets** - George Shearing's jazzy settings of Shakespeare texts, together with a selection of beautiful and rousing folk songs from the UK, USA, Torres Strait, New Zealand and Australia. **With special guests, local trio, Trilogy.** Come and join us on the journey! Poster on following page.

# SONGS & SONNETS



**THE SHOALHAVEN LYDIAN SINGERS**

WITH  
SPECIAL GUESTS:  
**TRILOGY**

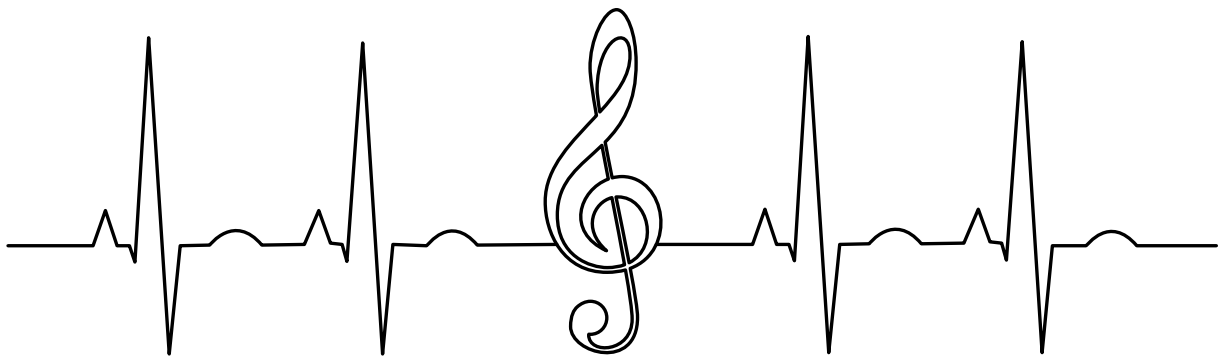
George Shearing's jazzy settings of Shakespeare texts, together with a selection of beautiful and rousing folk songs from the UK, USA, Torres Strait, New Zealand and Australia.

**Come and join us on the journey!**

**SATURDAY 12TH APRIL 2025, 2PM, BERRY SCHOOL OF ARTS  
SUNDAY 13TH APRIL 2025, 2PM, NOWRA SCHOOL OF ARTS**







## 2025 Committee

**President:** Jan Larson

**Vice-President:** Roy Frazier

**Music Director:** Ona Boyd-Frazier

**Secretary:** Gail Stebbings

**Treasurer:** Margaret Perkins

**Committee Members:** Susan Ballinger, Jacqui Bowen, Helen Gray, Colin Marstin, Sarah Turvey (Public Officer).

**Special thanks to:**

Leanne Windsor (Website and Facebook Page)  
& David Wilson (Auditor)

Postal address: c/o 68 Main Rd, Cambewarra, NSW 2540  
Phone: Ona Boyd-Frazier 0400 890 839

[www.musicshoalhaven.org.au](http://www.musicshoalhaven.org.au)